

# Kushed Bulletin

Issued by: Ku-ring-gai Community Workshop 'The Shed' Inc.

Date: 17 June 2020

## Shed re-opening Monday 22 June 2020

The Shed will re-open on Monday 22 June 2020. To minimise the COVID-19 infection risk to our members, we have to restrict the number of attendees on any particular day in any given area. The Shed Committee has put together a range of measures to limit exposure to transmission of the virus and comply with Government guidelines.



You will be required to agree, and to adhere, to the COVID-19 Safety procedures by signing a form when you attend the Shed. The [full procedures can be found here](#) Please read them carefully to ensure you understand them before signing your agreement on arrival at the Shed.

### The main safety procedure points are:

- Your responsibilities
- Arrival procedures
- Layout and use of the areas of the Shed
- Cleaning throughout the day
- Use of kitchens and other common areas
- Personal Protection Equipment (PPE)

On arrival you also need to sign the attendance sheet at the door for record tracing, and show your own Personal Protection Equipment. If you do not have your own PPE then you can purchase the Shed package for eye, hearing and respiratory protection. The cost is \$20 cash, please bring the exact amount. We may not have the full kit available on the first few days and outstanding items will be supplied later.

The COVID*Safe* app is encouraged but not compulsory.

In order to ensure that the numbers permitted to use a specific areas are not exceeded, Members with a current Name Badge are to book online with Eventbrite, simply connect to:

<https://www.eventbrite.com.au/e/kushed-tickets-108801054884>

Choose the date and book a ticket for your selected area. You will then be advised by email if your booking has been accepted, within the limit for that area.

If the activity you want to engage in has a full complement, then you will be placed on the waiting list for that day.

Members are permitted to attend only once each week to ensure fair access for all, unless there are specific circumstances approved by the Committee.

Bookmark the Eventbrite webpage for future use.

People max	Work area
10	Wood working benches
2	Wood turning
2	Box making
2	Panel saw
1	Framing and light craft
1	Admin desk
3	Light engineering
1	Welding bay
3	MPS room

## Preparing to Re-open



The safety committee has been busy preparing the Shed for the re-opening according to the Safety procedures. Training has been given by Kevin to the Coordinators and First Aiders in the new COVID 19 safety procedures.

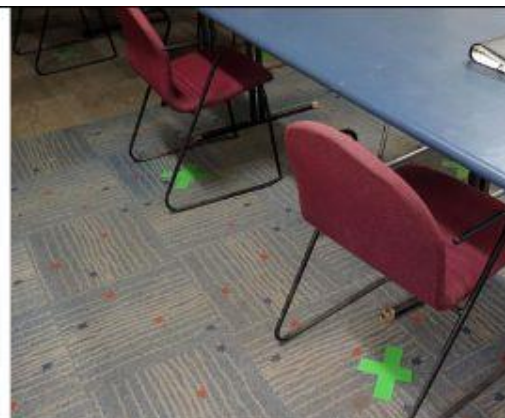
The work area has been divided in 4 square metres per person, sanitiser stations set up, signs prepared and fixed to the walls and signing-in procedures designed. It may all feel a bit strange in the beginning and you are asked to cooperate with the coordinator to make it all work.



*Work station*



*Not a workstation*





## Wishing you well

Our thoughts are with Graeme Bradshaw who on Tuesday 9th June, qualified to join the Prostate Club. He had a robotic Prostatectomy at the San and hopes to be back in action very soon. We wish him all the best for a quick recovery.

## Letterbox



The Tuesday guys completed 90% of this letterbox when our Shed suddenly closed. Tony took the letterbox home and completed it to avoid having the customer wait for months. He collected it from Tony's home unpainted as shown above. The customer was very happy with it and paid us more than the original quoted price. The letterbox is made from marine plywood, stainless steel hinges, screws and nails along with waterproof glue, so it should last many years.

Always so enjoyable to make something we are proud of and where the customer is satisfied.

## New Seat Covers for Ute

A small tear appeared on the driver's seat of our Ute. Tony purchased new seat covers and Stephen and Mark installed them.

Maybe not earth shattering enough for the bulletin but news worthy nonetheless.



## Notifications

Change to a bank you'll feel good about

## Bendigo Community Bank Turrumurra and Lindfield

Did you know that when you open an account or enquire about a home loan with the Turrumurra or Lindfield Community Bank we'll donate \$50 to the

Ku-ring-gai Men's Shed! Offer expires end of June 2020

[See the full leaflet here.](#)

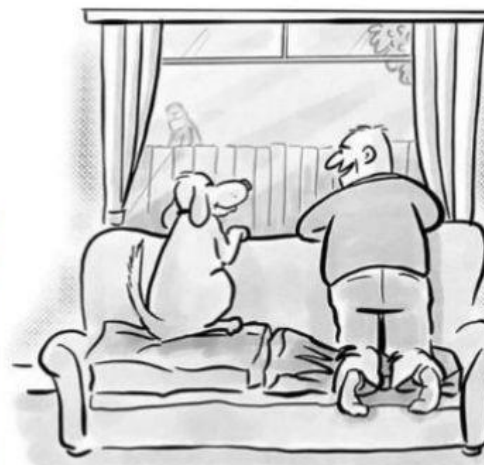


Tune into the Shed Wireless episodes 1 to 6, as we continue our journey discovering the development of Men's Sheds around the world, and some other interesting stuff at <https://mensshed.org/theshedwireless>

## And now for something completely different



Corona beer changes their name to avoid association with the Coronavirus outbreak



*"Until now, I never understood why you got so e when someone walked past the house."*

Copyright © 2020 Ku-ring-gai Community Workshop 'The Shed' Inc, All rights reserved.

You are receiving this email as a member of the Ku-ring-gai Shed

**Location:** St Ives Showground, 450 Mona Vale Road, St Ives.

**Phone:** (02) 9983-9732

**Web:** <http://www.kushed.org.au>

**Email:** [kushed@bigpond.com](mailto:kushed@bigpond.com)

**Our mailing address is:**

Ku-ring-gai Community Workshop 'The Shed' Inc

PO Box 216

GORDON, NSW 2072

Australia

[Add us to your address book](#)