

Kushed Bulletin

Issued by: Ku-ring-gai Community Workshop 'The Shed' Inc.

Date: 07 December 2018



Christmas Luncheon - Last Reminder

The much anticipated Christmas luncheon will take place at the Shed on **Friday 14 December 2018, starting at midday with a donation of \$20** for meal and drinks.

We hope that you can catch up with members who you don't see so often and also meet some of the new members.

Please NOTE that due to our space limitations in the Multi Purpose Centre, all places are now filled and only those already registered can participate.

The meal will be prepared by our cooking group and there will be the obligatory raffle with fabulous prizes.

Clean-up and Last Shed Day

Thursday 20 December 2018 will be the Shed clean day. Volunteers are invited in to provide a thorough clean-out of the Shed.



It will also be the last Shed day for 2018. The Shed will re-open on 7 January 2019.



Kevin Callinan - A Profile

Kevin was born in 1942 at Darlinghurst, although his parents were living in Campbelltown at that time and remained there until 1946. They then returned to the family home in Maroubra.

He achieved sufficient marks in the Leaving Certificate to get into Dentistry, where he spent 2 years, enjoying the more social aspects of University life.

A short stint as Assistant Buyer in David Jones Menswear saw him almost cause a riot when he managed to offload thousands of surplus sports shirts at severely marked down prices within a matter of a few hours.

Kevin then joined the Australian Public Service, put his head down and rose to Level 4 manager within a few years.

He spent many years at Sydney's Garden Island Naval Base, managing areas in Finance, Personnel, Industrial relations and Dockyard Development.

In 1988, Kevin moved to Canberra as part of a high level management team, tasked with the corporatisation of various government agencies to create the Australian Defence Industries.

He then worked at ADI as Corporate General Manager Personnel responsible for a broad range of functions across a range of former government factories and dockyards.

ADI was eventually acquired by a Corporate consortium. As part of cost cutting exercises Kevin was retrenched but was also retained as a consultant.

Some of his major achievements during Kevin's time at ADI were the reduction in numbers of unions from 31 to 5; the introduction of decentralised Enterprise Bargaining wage negotiations, Competency based wage structures and innovative sick leave arrangements and reformed workers Compensation arrangements.

Kevin retired in 1996, with an initial interest in making dolls houses as a hobby. The need for machines and tools for this hobby and more general activities led him to meet and work with like-minded men.

Before establishing the St Ives Shed Kevin spent some years as President of the Ku-ring-gai Historical Society with a strong interest in family history.

The St Ives Shed was formed in 1999 and opened at St Ives in 2011 and Kevin was the first President

The Australian and NSW Men Sheds Association were formed in 2007, and Kevin became Secretary/Treasurer of the NSW branch

He later joined the board of the Australian Men's Shed Association and was elected President/ Chairman in 2011; he retired from Chairmanship in June 2018

His wizardry with obtaining grants was a major benefit in raising money for the building and equipping of the initial Shed and Block B, which opened in 2018. Kevin successfully obtained in excess of \$270,000 in grants for construction and equipping the Shed

Kevin has been married for 54 years, and has two children and four granddaughters.



The Shed's Contribution to Christmas

Above is a Nativity Scene that we made recently at the Shed for the Salvation Army Retirement Village at Collaroy.

Edith, one of their active managers, obtained plans from USA (3/4 full scale) of the Nativity Scene and sought organisations around her area to cut them out, with no success.

Edith then approached another Mens Shed with also no success. She then approached us, we said yes, we will give it a go.

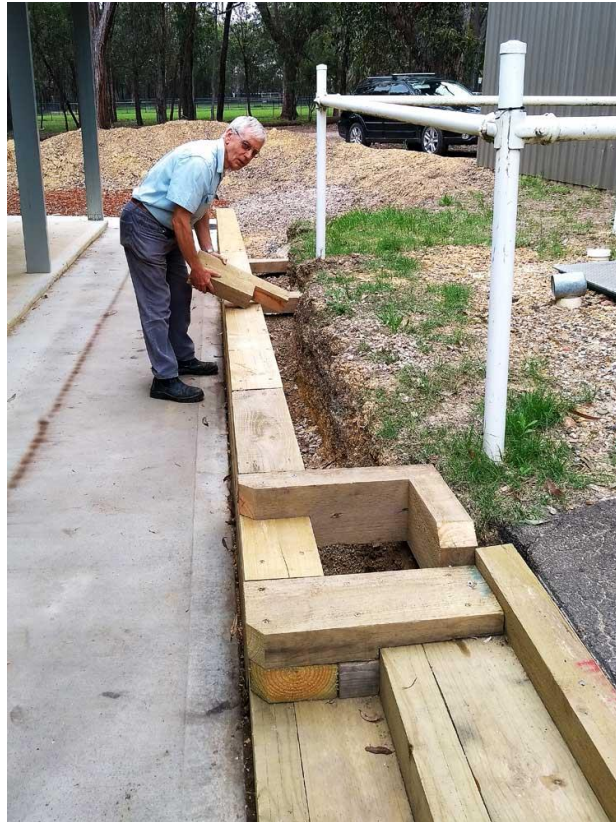
The Team of Kevin , Stephen , Mario , John, Ric and Rob (the band of merry men responsible for the Insulated Native Bee Boxes) started production of the 2 units needed.

Many man hours and a few blisters later, the units, cut from 19mm ply, were finished and delivered to Edith for painting.

There was great satisfaction for the Shed Team on completing the project and for doing some community work for the Salvation Army.

The Things We Do

With the year rapidly approaching a close, frenetic efforts are being made to complete projects and final landscaping. The New Year will see the Shed Bushcare Group working to re-mediate the surrounding bush land.



Malcolm is working on the retaining wall between our extension and the Douglas Pickering Pavilion. When the wall is in place the remaining rubble pile at the back of the extension will be used to backfill the space.



Michael fabricating a honey extraction table



Tony conducting router training towards obtaining accreditation to use this machine



Keith and Bernhard making more Christmas trees



Tony finishing a hobby horse restoration



David and Derek constructing more electioneering A-frames for displaying voting posters



Di adds a bit of Thanksgiving to the Shed, plus some wonderful pumpkin tarts.



First meeting of the Shed Bushcare group. This group will begin the task of replanting the bushland surrounding the Shed. This will utilise our Bushcare plan to plant trees and grasses native to the area.

What's Cooking

The cooking class had a tremendous time at our last session and could not have enjoyed our 'gourmet' meal more than had we been at a 3-hat restaurant!

Our last supper menu:

Entree	Crumbed Baby Mushrooms Spinach & Feta Pinwheels
Main	Prawn & Pasta Salad
Accompaniment	Greek Salad
Dessert	Spiced Red Wine Poached Pears

Turrumurra and Lindfield
Community Bank® branches



Bendigo Bank

Proud supporters of
THE SHED
Ku-ring-gai Community
Workshop

Copyright © 2018 Ku-ring-gai Community Workshop 'The Shed' Inc, All rights reserved.
You are receiving this email as a member of the Ku-ring-gai Shed

Location: St Ives Showground, 450 Mona Vale Road, St Ives.

Phone: (02) 9983-9732

Web: <http://www.kushed.org.au>

Email: kushed@bigpond.com

Our mailing address is:

Ku-ring-gai Community Workshop 'The Shed' Inc

PO Box 216

GORDON, NSW 2072

Australia

[Add us to your address book](#)

